

# PUNTA GORDA STATION

NWC of Jones Loop | Punta Gorda, FL 33950

Ground Lease | Build-To-Suit

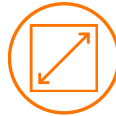


**LQ Commercial**  
REAL ESTATE SERVICES

**LOCRE.COM**



**1 - 2± AC  
OUTPARCEL SIZE**



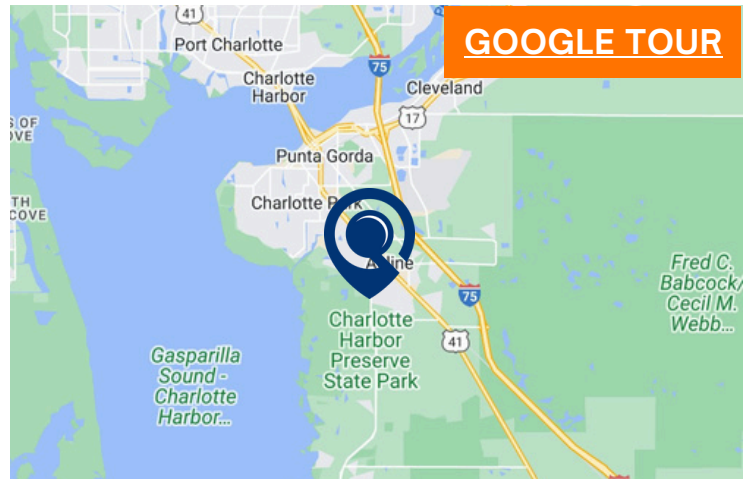
**1,385 - 2,785± SF  
SHOP SPACE SIZES**



**CALL  
FOR RATES**

- Across the street from Aldi and Walmart
- Signalized Access
- 2 miles from Punta Gorda Airport which sees 1.9M+ passengers per year
- Strategically situated on Jones Loop Road between I-75 and US-41
- 12,000+ housing units planned/under construction within close proximity
- Jones Loop is the daily needs corridor for the area

**[LOCRE.COM/PUNTA-GORDA-STATION](https://locre.com/punta-gorda-station)**



**5-MILE POPULATION**

**36,537**



**5-MILE INCOME**

**\$112,324**



**5-MILE EMPLOYEES**

**16,257**



1614 Colonial Blvd #101  
Fort Myers, FL 33907

**[LOCRE.COM](https://locre.com)**

**Bob Pekol**

Senior Associate

D: 239.333.4369

C: 239.872.7777

[bpekol@locre.com](mailto:bpekol@locre.com)

**Jessica McEvoy**

Senior Associate

D: 239.333.4374

C: 239.220.1535

[jmcevoy@locre.com](mailto:jmcevoy@locre.com)



# PUNTA GORDA STATION

NWC of Jones Loop | Punta Gorda, FL 33950

Ground Lease | Build-To-Suit



**LQ Commercial**  
REAL ESTATE SERVICES

**LQCRE.COM**



## DEMOGRAPHICS

5 MILES

|                                       |           |
|---------------------------------------|-----------|
| 2029 Projected Population             | 39,117    |
| 2029 Projected Annual Growth          | 1.4%      |
| Median Age                            | 61.0      |
| Households                            | 18,323    |
| White                                 | 88.6%     |
| Black or African American             | 4.0%      |
| Asian or Pacific Islander             | 1.4%      |
| American Indian or Native Alaskan     | 0.2%      |
| Other Races                           | 5.8%      |
| Hispanic                              | 6.9%      |
| Average Household Income              | \$112,324 |
| Median Household Income               | \$78,684  |
| Elementary (Grade Level 0 - 8)        | 1.3%      |
| Some High School (Grade Level 9 - 11) | 4.8%      |
| High School Graduate                  | 28.3%     |
| Some College                          | 23.2%     |
| Associates Degree Only                | 10.6%     |
| Bachelors Degree Only                 | 19.1%     |
| Graduate Degree                       | 12.6%     |
| Total Businesses                      | 2,429     |
| Total Employees                       | 16,257    |



614 Colonial Blvd #101  
Fort Myers, FL 33907

**LQCRE.COM**

**Bob Pekol**

Senior Associate

D: 239.333.4369

C: 239.872.7777

[bpekol@lqcre.com](mailto:bpekol@lqcre.com)

**Jessica McEvoy**

Senior Associate

D: 239.333.4374

C: 239.220.1535

[jmcevoy@lqcre.com](mailto:jmcevoy@lqcre.com)



# PUNTA GORDA STATION

NWC of Jones Loop | Punta Gorda, FL 33950

Ground Lease | Build-To-Suit



**LQ Commercial**  
REAL ESTATE SERVICES

**LOCRE.COM**



614 Colonial Blvd #101  
Fort Myers, FL 33907

**LOCRE.COM**

**Bob Pekol**

Senior Associate

D: 239.333.4369

C: 239.872.7777

[bpekol@lqcre.com](mailto:bpekol@lqcre.com)

**Jessica McEvoy**

Senior Associate

D: 239.333.4374

C: 239.220.1535

[jmcevoy@lqcre.com](mailto:jmcevoy@lqcre.com)

Information obtained from owner(s) or sources deemed reliable. We have no reason to doubt its accuracy, but cannot guarantee it. Property is subject to change or withdraw without notice.

# PUNTA GORDA STATION

NWC of Jones Loop | Punta Gorda, FL 33950

Ground Lease | Build-To-Suit



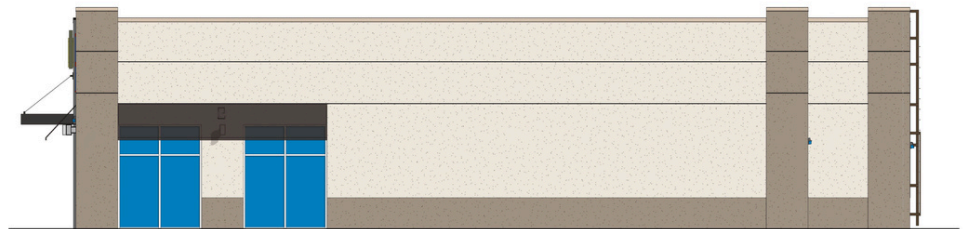
**LQ Commercial**  
REAL ESTATE SERVICES

**LQCRE.COM**

FOR LEASE  
1,385 – 2,785± SF



FOR LEASE  
1,600 SF



EAST ELEVATION  
SCALE: 3/16" = 1'-0"



614 Colonial Blvd #101  
Fort Myers, FL 33907

**LQCRE.COM**

**Bob Pekol**

Senior Associate

D: 239.333.4369

C: 239.872.7777

[bpekol@lqcre.com](mailto:bpekol@lqcre.com)

**Jessica McEvoy**

Senior Associate

D: 239.333.4374

C: 239.220.1535

[jmcevoy@lqcre.com](mailto:jmcevoy@lqcre.com)



# PUNTA GORDA STATION

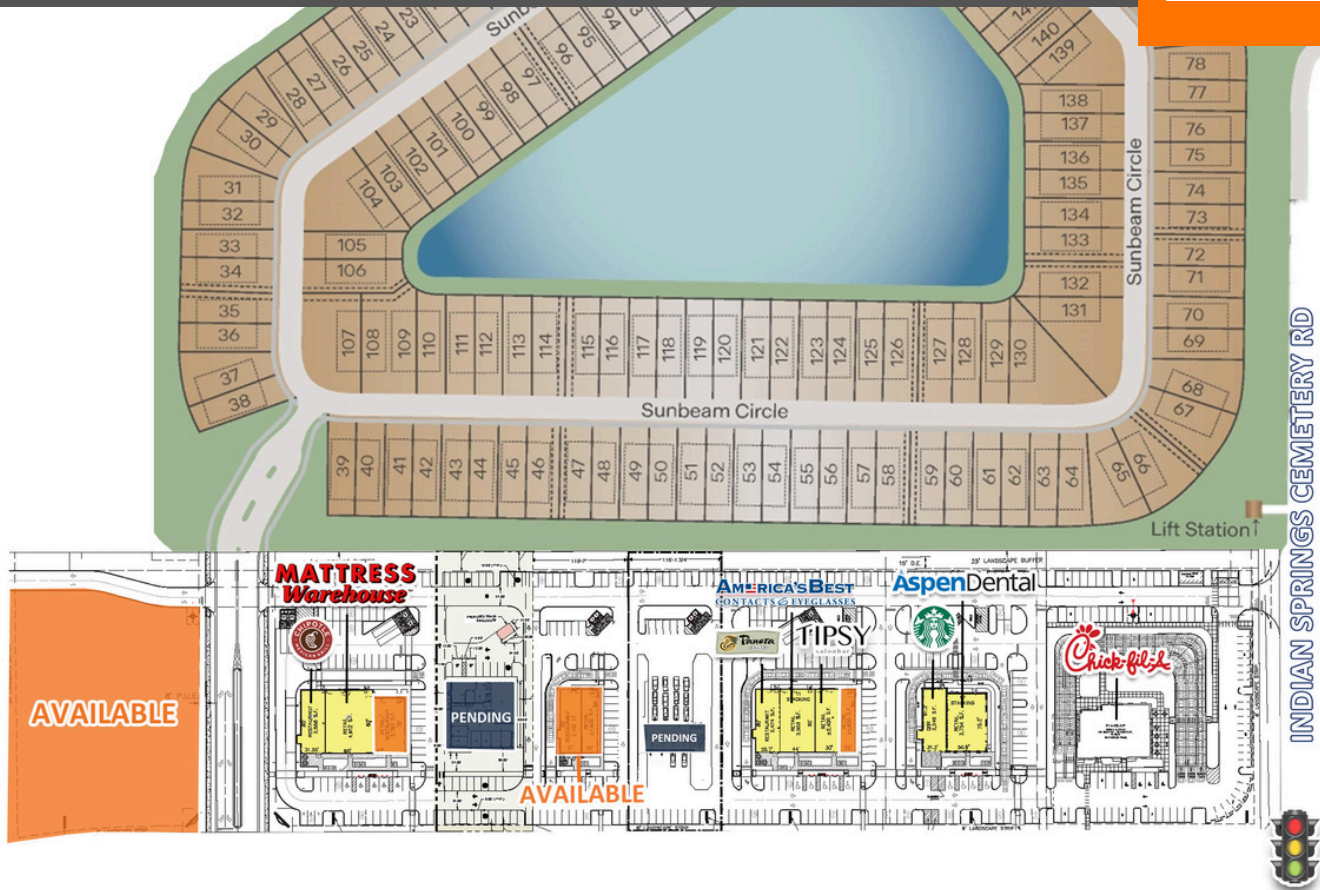
NWC of Jones Loop | Punta Gorda, FL 33950

Ground Lease | Build-To-Suit



**LQ Commercial**  
REAL ESTATE SERVICES

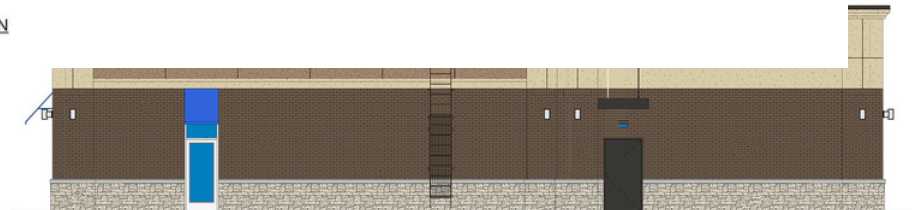
**LOCRE.COM**



FULLY LEASED



1 SOUTH ELEVATION  
A21 SCALE: 3/16" = 1'-0"



614 Colonial Blvd #101  
Fort Myers, FL 33907

**LOCRE.COM**

**Bob Pekol**

Senior Associate

D: 239.333.4369

C: 239.872.7777

[bpekol@lqcre.com](mailto:bpekol@lqcre.com)

**Jessica McEvoy**

Senior Associate

D: 239.333.4374

C: 239.220.1535

[jmcevoy@lqcre.com](mailto:jmcevoy@lqcre.com)

Information obtained from owner(s) or sources deemed reliable. We have no reason to doubt its accuracy, but cannot guarantee it. Property is subject to change or withdraw without notice.



# PUNTA GORDA STATION

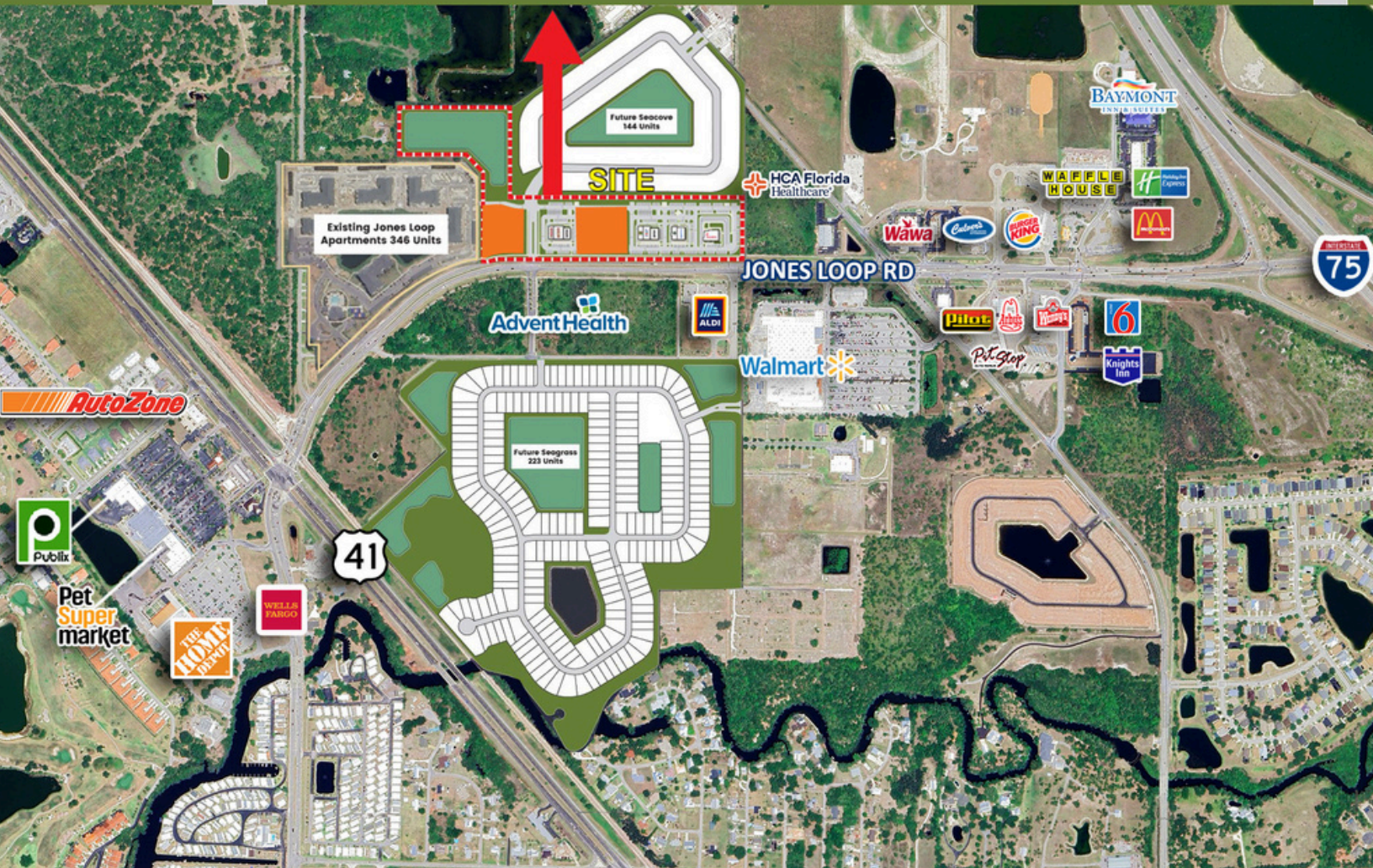
NWC of Jones Loop | Punta Gorda, FL 33950

Ground Lease | Build-To-Suit



**LQ Commercial**  
REAL ESTATE SERVICES

**LOCRE.COM**



**LQ Commercial**  
REAL ESTATE SERVICES

614 Colonial Blvd #101  
Fort Myers, FL 33907

**LOCRE.COM**

**Bob Pekol**

Senior Associate

D: 239.333.4369

C: 239.872.7777

[bpekol@lqcre.com](mailto:bpekol@lqcre.com)

**Jessica McEvoy**

Senior Associate

D: 239.333.4374

C: 239.220.1535

[jmcevoy@lqcre.com](mailto:jmcevoy@lqcre.com)

Information obtained from owner(s) or sources deemed reliable. We have no reason to doubt its accuracy, but cannot guarantee it. Property is subject to change or withdraw without notice.



# PUNTA GORDA STATION

NWC of Jones Loop | Punta Gorda, FL 33950

Ground Lease | Build-To-Suit



**LQ Commercial**  
REAL ESTATE SERVICES

**LQCRE.COM**



**LQ Commercial**  
REAL ESTATE SERVICES

614 Colonial Blvd #101  
Fort Myers, FL 33907

**LQCRE.COM**

**Bob Pekol**

Senior Associate

D: 239.333.4369

C: 239.872.7777

[bpekol@lqcre.com](mailto:bpekol@lqcre.com)

**Jessica McEvoy**

Senior Associate

D: 239.333.4374

C: 239.220.1535

[jmcevoy@lqcre.com](mailto:jmcevoy@lqcre.com)



[illegible]

[jmcevoy@lqcre.com](mailto:jmcevoy@lqcre.com)



[www.lgcre.com](http://www.lgcre.com)

Information obtained from owner(s) or sources deemed reliable. We have no reason to doubt its accuracy, but cannot guarantee it. Property is subject to change or withdraw without notice.